

Q-global® – a secure and affordable digital administration, scoring and reporting system



A guide to Pearson's digital solution that uses familiar technology to shorten your administration time and help give you a better understanding of your clients' needs.

Table of Contents

Introducing Q-Global®	<u>p1</u>
How does Q-Global work?	<u>p2</u>
Flexible delivery and reporting	<u>p3</u>
Who can use Q-Global?	<u>p4</u>
Telepractice with Q-Global®	<u>p5</u>
Assessments available on Q-Global®	<u>p6-24</u>
Sample reports	<u>p25</u>
What is Q-interactive™?	<u>p26-27</u>
Privacy and Security	<u>p28</u>

Introducing Q-global®

Q-global™ is our secure and affordable web-based administration, scoring and reporting system that allows you to input results from paper-and-pencil assessments to generate scores, and produce accurate comprehensive reports.

It can also be used to administer questionnaire type assessments either on your screen or via a secure link emailed to the examinee or caregiver. Certain assessment resources are now also available to use in a 'Telepractice' setting.

Q-global® houses the industry's gold standard assessment tools that Speech Language Therapists, Occupational Therapists, SENCOs and Psychologists can access through any device connected to an up to date web browser.



How does Q-global work?

Q-global allows you to manage and retrieve examinee information, generate scores from assessment data, and produce accurate, comprehensive assessment reports.

All of these activities are performed in a secure, private web environment that helps professionals streamline their assessment workflow while complying with widely accepted data privacy standards. The web-based nature of Q-global provides you with unprecedented flexibility in providing the care anytime and anywhere.



Flexible delivery and reporting

Q-global® offers three different delivery and reporting options, to best suit your methods of assessment:

- 1.** On Screen administration (OSA) - Conduct assessments on screen using your device
- 2.** Remote On Screen administration (ROSA) - Send assessment via email to examinee, parent or caregiver to complete.
- 3.** Manual Entry - Enter assessment data from a paper record form
- 4.** Via Telepractice - Deliver certain assessments via remote screensharing technology before entering data into the platform to score.

Once assessment data is received into the platform via any of the above methods, you can seamlessly generate a report. Options for delivery vary by assessment, see our availability matrix on page 5 for options.



Who can use Q-global?

Speech Language Therapists, Occupational Therapists, SENCOs and Psychologists and other professionals can use the Q-global® testing system to quickly and efficiently administer assessments, generate scores, and produce reports.

Qualification levels

All Pearson Clinical Assessments products in the UK are assigned a qualifications level of either CL1, CL2, CL2R, or CL3 (with CL1 being the highest qualification level).

In order to establish which Q-global® products are available to you, simply compare your training code against the product qualification code:

Your Code	Available Product Codes
CL1	All CL products
CL2	CL2, CL2R, CL3
CL2R	CL2R, CL3
CL3	CL3

[Find out more on the different levels here](#)

Telepractice with Q-global®

We understand that in certain circumstances, in-person sessions may not be possible. Telepractice enables you to continue to provide care, by applying familiar online technologies to connect you to your clients in a virtual session.

Q-global's web-based administration, scoring and reporting system enables you to administer a selection of assessments remotely or via Telepractice, so you can continue supporting your clients.

[Read our Telepractice advice for more information](#)

Contact us

If you have specific requests or questions related to Telepractice, please book a 15-minute slot with our online Assessment Consultants who can assist with questions you may have.

[Talk to an Assessment Consultant](#)



Assessments available on Q-global®

To sign-up to Q-global and purchase our assessments, you first need to register with us and prove your qualification level. Please refer to Page 4 for information on the different levels.

In this guide you will find details on the key assessments available to you on Q-global and a further full product list.

Beck Anxiety Inventory® (BAI®)

Measure the severity of anxiety in adults and adolescents

The BAI evaluates both physiological and cognitive symptoms of anxiety and item overlap where other self-report depression inventories are minimised.

Qualification code: CL2

Age range: 17 years and older

Administration: Individual – 5 to 10 mins



BASC-3

Understand the emotions and behaviours of children and adolescents

The Behavior Assessment System for Children (BASC) can help children thrive in their school and home environments and holds an exceptional track record for providing a complete picture of a child's behaviour.

Qualification code: CL2R

Age range: 2 years and to 21 years 11 months

Administration: Individual – 5 to 10 mins



BASC-3 BESS

Brief, universal screening system for measuring behavioural and emotional strengths and weaknesses

This test offers a reliable, quick, and systematic way to determine behavioural and emotional strengths and weaknesses of children and adolescents. Such as Academic problems and issues associated with developing and maintaining positive relationships with others, which can be the result of underlying behavioural and emotional deficits that, when caught early, can be corrected before negatively affecting a child or adolescent.

Qualification code: CL2R

Age range: 2 years and to 18 years 11 months

Administration: Individual – 5 to 10 mins



BASC-3 Flex

A computer-based collection, scoring, and reporting system that will enable users to track behavioural progress over time

This exciting addition to the BASC-3 family enables psychologists and professionals in a school or clinical environment to monitor and track the effects of a behavioural intervention plan. Completely web-based, efficient, and comprehensive, the Flex Monitor can be used to develop effective progress monitoring forms that can be used to track changes in behavioural and emotional functioning.

Qualification code: CL2R

Age range: 2 to 18:11 years (Teacher and Parent); 8:0 — 18:11 years (Self-Report)

Administration: Individual – 5 to 10 mins



BASC-3 PRQ

Designed to capture a parent's perspective on the parent-child relationship

The PRQ has two forms: Preschool (ages 2-5) and Child and adolescent (ages 6-18) which can be completed in 10-15 minutes by the mother, father or other primary caregiver to learn more on their perspective on their parent-child relationship.

Qualification code: CL2R

Age range: 2 years to 18 years 11 months

Administration: Individual – 5 to 10 mins



Brief Battery for Health Improvement (BBHI 2)



Assess pain, functional levels and psychological factors in pain and rehabilitation patients

The BBHI 2 Test helps medical professionals assess the important mind/body connection for their patients. Derived from the BHI test, the shorter BBHI 2 helps practitioners quickly evaluate for a number of psychomedical factors in medical patients. This test helps you obtain a comprehensive overview of the patient, which will help in treatment planning and evaluation.

Qualification code: CL2

Age range: 18 years to 65 years

Administration: Individual – 7 to 10 mins

Beck Depression Inventory®- II (BDI®-II)



Assess the severity of depression

A widely used instrument used to detect depression. This edition features items that will bring it in line with current depression criteria of the Diagnostic and Statistical Manual of Mental Disorders - Fourth Edition (DSM-IV).

Qualification code: CL2

Age range: 13 years to 80 years

Administration: Individual – 5 mins

Battery for Health Improvement 2 (BHI 2)



Efficiently assess validity, physical symptoms, psychological, character, environment, and social factors that can impact medical treatment.

The BHI 2 is designed to present a concise, co-ordinated assessment of the biopsychosocial issues and can help caregivers shape an appropriate treatment plan, reduce treatment time and improve a patient's quality of life. This test helps measure numerous outcomes, including reduction of pain, improvement in function and satisfaction with care.

Qualification code: CL2

Age range: 18 years to 65 years

Administration: Individual – 30 to 45 mins

Beck Hopelessness Scale® (BHS®)



Measure three major aspects of hopelessness

This test helps measure 3 major aspects of hopelessness: Feelings about the future; Loss of motivation and Expectations. It is designed to measure an individual's attitudes about their long-term future and consists of 20 true/false items, with patients endorsing either a pessimistic statement or denying an optimistic statement. The BHS acts as a powerful predictor of suicidal intent.

Qualification code: CL2

Age range: 17 years to 80 years

Administration: Individual - 10 minutes

Bruininks Motor Ability Test (BMAT)



Standardised test of gross and fine motor skills for adults, adapted from a test you trust

This is an individually administered, standardised test of gross and fine motor skills for adults. Adapted from the BOT™-2, the BMAT is ideal for professionals in occupational therapy and physiotherapy, nursing, human performance, and physical rehabilitation to determine if motor function issues need to be addressed before they can live independently.

Qualification code: CL2

Age range: 40 years and older

Administration: Short Form and Individual Subtests– 10 mins

Bruininks-Oseretsky Test of Motor Proficiency, Second Edition (BOT-2)



Assess the motor proficiency of all students

The BOT-2 features a new administration manual with an easy-to-use layout, giving you access to all the information you need on a single page. The manual also provides suggestions to guide examiners in explaining the tasks. For the examinee, large, clear pictures of the tasks being completed help provide a better understanding of the test items, especially for children who have language, cognition or attention problems. It can also be used for developing and evaluating motor training programmes.

Qualification code: CL2

Age range: 4 years to 21 years

Administration: Individual – 45 to 60 mins

Browns Executive Function/Attention Scales (Browns EF/A Scales)



Screen and assess a wider range of impairments of executive functioning and attention

As an update to the widely used Brown ADD Scales™, the Brown EF/A Scales goes beyond other measures to screen and assess a wider range of impairments of executive functioning and attention, including ADHD.

Qualification code: CL2R

Age range: 3 years and older

Administration: Individual – 10 to 15 mins

Brief Symptom Inventory (BSI)



Quickly measure psychological symptoms in children 13 years and older

The efficient Brief Symptom Inventory (BSI) instrument provides patient-reported data to help support clinical decision-making at intake and during treatment in multiple settings. Psychologists, psychiatrists, physicians, nurses, and other healthcare professionals can use the BSI instrument to help assess clients for psychological problems.

Qualification code: CL2

Age range: 13 years and older

Administration: Individual – 8 to 10 mins

Brief Symptom Inventory 18 (BSI)



Quickly measure and monitor psychological distress

The Brief Symptom Inventory 18 (BSI 18) gathers patient-reported data to help measure psychological distress and psychiatric disorders in medical and community populations. This assessment is an integrated series of tools that include the SCL-90-R®, BSI®, and DPRS® instruments. The BSI 18 test offers an easy-to-administer tool to help support clinical decision-making and treatment.

Qualification code: CL2

Age range: 13 years and older

Administration: Individual – 4 mins

Beck Scale for Suicide Ideation® (BSS™)

Assess an individual's thoughts, attitudes and intentions regarding suicide



The Beck Scale for Suicide Ideation® (BSS™) is a valuable tool for clinicians to examine suicidal intent in patients. Developed for use with patients of 17 years and over, the BSS™ provides a good starting point for a clinician's more detailed examination of a patient's suicidal intent. The BSS™ is also useful for monitoring suicide ideation of patients who are known to be at risk for suicide.

Qualification code: CL2

Age range: 17 years and older

Administration: Individual – 5 to 10 mins

Beck Youth Inventories™ - Second Edition for Children and Adolescents (BYI-II)



Evaluate children's and adolescents' emotional and social impairment

Five self-report inventories that can be used separately or in combination to assess symptoms of depression, anxiety, anger, disruptive behaviour and self-concept, to ensure confidence in your clinical decision making, while helping you plan effective intervention.

Qualification code: CL2R

Age range: 7 years and 18 years

Administration: Individual or group – 5 to 10 mins

Children's Communication Checklist (CCC-2)

A 70-item questionnaire screens for communication problems in children aged 4 to 16 years



The CCC-2 is the latest version of a checklist that has been in development for 10 years. The 70-item questionnaire completed by a caregiver screens for communication problems in children aged 4 to 16 years. It can be hand or electronically scored.

Qualification code: CL2

Age range: 4 years to 16 years

Administration: Individual – 5 to 15 minutes

Clinical Evaluation of Language Fundamentals – Fifth Edition (CELF-5 UK)



Identify children's and young people's communication challenges, wherever they may be

The CELF-5UK is a comprehensive, UK normed battery of tests that offers a streamlined, flexible approach to language assessment. It provides speech and language professionals highly accurate diagnostic information with current normative data, reflecting the UK's diverse population.

Qualification code: CL2

Age range: 5 years to 21 years 11 months

Administration: Individual – 30 to 45 mins

CELF-Preschool 2 UK



Measure a broad range of expressive and receptive language skills in young children

The CELF-Preschool 2UK was developed to strengthen the CELF-PreschoolUK as a reliable and valid test for the diagnosis and classification of language disorders in young children. The floor and ceiling of the assessment have been expanded, it contains interesting, age-appropriate, full-colour pictures to hold the child's attention and is now easier to use and administer.

Qualification code: CL2R

Age range: 3 years to 6 years

Administration: Individual – 30 to 45 mins

Clinical Evaluation of Language Fundamentals®, Fifth Edition Metalinguistics



CELF-5 Metalinguistics provides a measure of higher-level language

A revision of the Test of Language Competence-Expanded, the CELF-5 Metalinguistics assessment includes four tests of higher-level language skills that are embedded in school curricula and are critical to classroom success. Use it to measure a student's ability to think about and use language to make inferences, manipulate conversational speech given a context, use words in multiple ways, and use language in a non-literal manner.

Qualification code: CL2

Age range: 9 years to 21 years 11 months

Administration: Approximately 45 minutes for the Total Metalinguistics Score

California Verbal Learning Test – Third Edition (CVLT-3)



Assess verbal learning and memory deficits in adults

The CVLT-3 is the most comprehensive and detailed assessment of verbal learning and memory for older adolescents and adults ages 16 and older. In this assessment, an examinee listens to series of words and is then asked to recall the terms and the category to which they belong. The CVLT is considered to be the most sensitive measure of episodic verbal learning.

Qualification code: CL1

Age range: 16 years to 89 years

Administration: Individual – 30 mins, plus 30 mins delay

DASH (Detailed Assessment of Speed of Handwriting)



Comprehensively assess students' handwriting speed and determine access arrangements

The Detailed Assessment of Speed of Handwriting (DASH) is ideal for providing evidence for Access Arrangements for Key Stage 2 National Curriculum Tests and for General Qualifications. It can also play a role in identifying children with handwriting difficulties and provides relevant information for planning intervention.

Qualification code: CL3

Age range: 9 years to 16 years 11 months

Administration: Individual or Group – 30 mins

Detailed Assessment of Speed of Handwriting (DASH 17+)



A reliable measure of handwriting speed for students in further and higher education

The DASH 17+ provides a reliable, age-appropriate measure of handwriting speed for students aged 17-25 years in further and higher education. This upwards extension of the DASH can identify students with slow handwriting and may assist in providing evidence for extra support, Access Arrangements in examinations or the Disabled Students' Allowance.

Qualification code: CL3

Age range: 17 years to 25 years

Administration: Individual or Group – 30 mins

Delis-Kaplan Executive Function System™ (D-KEFS™)



A comprehensive assessment of higher-level thinking and cognitive flexibility.

The Delis-Kaplan Executive Function System (D-KEFS) is the first nationally standardised (US norms) set of tests to evaluate higher level cognitive functions in both children and adults. With nine stand-alone tests, it comprehensively assesses the key components of executive functions believed to be mediated primarily by the frontal lobe.

Qualification code: CL1

Age range: 8 years to 89 years

Administration: Individual – 90 mins

Delis Rating of Executive Functions (D-REF)



Measure an individual's behaviours related to executive function difficulties

The D-REF lets you quickly and easily administer, score, and report the frequency of observed behaviours that identify executive function problems in children and adolescents ages 5-19. This flexible, sensitive assessment includes parent, teacher and self-ratings with 36 items that are answered as: Seldom/Never; Monthly; Weekly; or Daily.

Qualification code: CL2

Age range: 5 years to 18 years

Administration: Individual – 5 to 10 mins

Expressive Vocabulary Test Third Edition (EVT-3)



Easily measure expressive vocabulary and word retrieval in children and adults

The Expressive Vocabulary Test, Third Edition (EVT-3) is a norm-referenced, individually administered test of expressive vocabulary and word retrieval based on words in Standard American English. The EVT-3 maintains the basic format and qualities of the EVT-2 (e.g., parallel forms, stimulus questions, easy administration and response capture, accurate scoring) with additional upgrades and digital applications.

Qualification code: CL2R

Age range: 2 years and 6 months to 90+ years

Administration: Individual – 10 to 15 mins

Goldman-Fristoe Test of Articulation™, Third Edition (GFTA™-3)



Accurately assess speech sound disorders

With new print and digital editions, the updated GFTA™-3 and KLPA™-3 offer the best choices for assessing speech sound disorders. The updated GFTA™-3 introduces exciting new features that make it easier than ever to obtain the accurate diagnostic information you need.

Qualification code: CL2

Age range: 2 years to 21 years 11 months

Administration: Individual – 5 to 15 mins

Kaufman Assessment Battery for Children, Second Edition Normative Update (KABC-II NU)



A culturally fair measure of cognitive ability suitable for all children

The KABC-II NU updates the normative data for the existing KABC-II product. The KABC-II NU has a broad theoretical base, making it the instrument of choice for all cognitive assessment applications. This test provides detailed, accurate information and unprecedented flexibility.

Qualification code: CL1

Age range: 3 years to 18 years

Administration: Individual – 25 to 55 mins (Luria model); 35 to 70 mins (CHC model)

Kaufman Test of Educational Achievement, Third Edition (KTEA-3)



Easily identify and assess strengths and weaknesses in key academic skills

The Kaufman Test of Educational Achievement, Third Edition (KTEA-3) helps you to quickly and easily identify strengths and weaknesses, to help you determine the right intervention to follow-up with. This test is an individually administered measure of academic achievement that evaluates key reading, maths, written language, and oral language skills.

Qualification code: CL2R

Age range: 4 years to 25 years 11 months

Administration: Dependant on examinee's age

Kaufman Test of Educational Achievement, Third Edition Brief Form (KTEA™-3 Brief)



Quickly assess strengths and weaknesses in key academic skills

The KTEA-3 Brief is an easy-to-administer test of key academic skills that yields a truly valid and reliable assessment, using six core subtests from the KTEA-3 Comprehensive Form B. This reliable tool also helps you Conduct analyses for the identification of a specific learning disability.

Qualification code: CL2R

Age range: 4 years to 25 years 11 months

Administration: 15 to 85 mins

Millon™ Adolescent Clinical Inventory-II (MACI-II)



Assess mental health and behaviour concerns in teens and adolescents

The MACI-II helps practitioners from a variety of settings assess personality patterns, expressed concerns, and clinical symptoms while its therapeutic focus will assist in making reliable diagnostic and treatment decisions.

Qualification code: CL1

Age range: 13 years to 18 years

Administration: 20 to 25 mins (160 true/false items)

Millon™ Adolescent Personality Inventory (MAPI)



Assess personality characteristics in adolescents

The Millon Adolescent Personality Inventory (MAPI) instrument is normed on both normal adolescents and adolescent patients. This tool can be easily administered to measure 3 distinct scale dimensions: personality styles, expressed concerns and behavioural patterns. This helps you to select the best approach to treatment and identify behaviour patterns and issues that need further exploration during therapy.

Qualification code: CL1

Age range: 13 years to 18 years

Administration: 20 to 30 mins (150 true/false items)

Millon™ Behavioral Medicine Diagnostic (MBMD)



Assess psychosocial factors in chronically ill patients

The MBMD assessment helps provide a broader understanding of the personal reality that each patient faces. By helping identify psychosocial assets and liabilities that may affect an individual's response to treatment, the MBMD enables you to develop tailored treatment recommendations. This test can help increase the likelihood of positive treatment outcomes and may thereby reduce the overall costs of care.

Qualification code: CL2

Age range: 18 years and older

Administration: 20 to 25 mins

Millon College Counseling Inventory (MCCI)



Effectively assess student concerns for those in further or higher education

The MCCI™ (Millon® College Counseling Inventory) is a multi-dimensional personality assessment that can help you address your struggling students' concerns and get them back to a healthy state-of-mind. This tool enables you to personalise treatment planning, monitor treatment interventions and assess outcomes.

Qualification code: CL1

Age range: 16 years to 40 years

Administration: Individual – 20 to 25 mins

Millon® Clinical Multiaxial Inventory-IV (MCMI®-IV)



Assesses DSM-5®-related personality disorders and clinical syndromes.

The Millon® Clinical Multiaxial Inventory-IV (MCMI®-IV) provides helpful clinical insights into a patient's personality that allow clinicians to make reliable diagnostic and treatment decisions.

Qualification code: CL1

Age range: 18 years and older

Administration: Individual – 25 to 30 mins

MIPS Revised (Millon Index of Personality Styles Revised)



A brief personality measure to assess normal personality styles for adults

This convenient tool helps professionals assist ostensibly normally functioning adults who may be experiencing difficulties in work, family or social relationships. It may also be helpful in career counselling or employment settings

Qualification code: CL2

Age range: 18 years and older

Administration: Individual – 30 mins

Millon Pre-Adolescent Clinical Inventory (M-PACI)



Identify psychological problems in pre-adolescent children

This assessment provides an integrated view that synthesises the child's emerging personality styles and clinical syndromes, helping clinicians detect early signs of Axis I and Axis II disorders.

Qualification code: CL1

Age range: 9 years to 12 years

Administration: Individual – 15 to 20 mins

NEW: Minnesota Multiphasic Personality Inventory®-3 (MMPI®-3)



Assesses adult psychopathology

A contemporary personality assessment for mental health, medical, forensic, and public safety settings. This newest version builds on the history and strengths of the MMPI instruments to provide an empirically validated, psychometrically up-to-date standard for psychological assessment.

Qualification code: CL1

Age range: 18 years and older

Administration: Individual – 25 to 50 mins

Minnesota Multiphasic Personality Inventory -2-Restructured Form® (MMPI-2-RF®)

Assesses major symptoms of psychopathology

The MMPI-2-RF provides a valuable alternative to the MMPI-2 test. The MMPI-2-RF aids clinicians in the assessment of mental disorders, identification of specific problem areas, and treatment planning in a variety of settings.

Qualification code: CL1

Age range: 18 years and older

Administration: Individual – 35 to 50 mins



Minnesota Multiphasic Personality Inventory® -Adolescent (MMPI®-A)

Helps to aid in problem identification, diagnosis, and treatment planning for adolescents

An empirically based measure of adolescent psychopathology, the MMPI-A test contains adolescent-specific scales, and other unique features designed to make the instrument especially appropriate for today's young people.

Qualification code: CL1

Age range: 14 years to 18 years

Administration: Individual – 35 to 50 mins



Minnesota Multiphasic Personality Inventory-Adolescent Restructured Form™ (MMPI-A-RF™)

The most up-to-date assessment of personality in adolescents

The MMPI-A-RF provides a valuable alternative to the MMPI-A test. This assessment is composed of 241 items, is linked to current models of psychopathology and personality, and features 48 empirically validated scales relevant for use with adolescents in a variety of clinical, forensic, and school settings.

Qualification code: CL1

Age range: 14 years to 18 years

Administration: Individual – 25 to 30 mins



Pediatric Evaluation of Disability Inventory Computer Adaptive Test (PEDI-CAT)



Effectively measure functional delays in children and young people with a variety of physical and/or behavioral conditions.

The PEDI-CAT is a computer adaptive caregiver report which measures Daily Activities, Mobility, Social/Cognitive, and Responsibility. It's designed for use with children and young people with a variety of physical and/or behavioral conditions.

Qualification code: CL2

Age range: Birth to 20 years

Administration: Individual – 10 to 20 mins

(P-3) Pain Patient Profile



Quickly evaluate for depression, somatisation and anxiety in pain patients

The Pain Patient Profile (P-3) assessment focuses on the factors most frequently associated with chronic pain. The test can help provide an objective link between the physician's observations and the possible need for further psychological assessment.

Qualification code: CL2

Age range: 17 years to 76 years

Administration: Individual – 12 to 15 mins

Raven's 2



Conveniently assess observation skills and clear-thinking ability without the impacts of language skills and cultural differences

The Raven's 2 is a comprehensive non-verbal assessment that allows you to measure high-level observation skills, clear-thinking ability and intellectual capacity by minimising the impacts of language skills and cultural differences, to give you a better understanding of your student's needs.

Qualification code: CL2R

Age range: 4 to 69 years

Administration: Individual and group – up to 45 mins

Symptom Checklist-90-Revised (SCL-90-R)

Evaluate a broad range of psychological problems and symptoms of psychopathology

The Symptom Checklist-90-R (SCL-90-R) instrument helps evaluate a broad range of psychological problems and symptoms of psychopathology. The instrument is also useful in measuring patient progress or treatment outcomes.

Qualification code: CL2

Age range: 13 years and older

Administration: Individual – 12 to 15 mins



Sensory Profile 2™

Evaluate children's sensory processing patterns at home, school, and in the community

The Sensory Profile 2 provides you with standardised tools to help evaluate a child's sensory processing patterns in the context of home, school and community-based activities. It features significantly revised questionnaires to evaluate a child's unique sensory processing patterns from a position of strengths, providing deeper insight to help you customise the next steps of intervention.

Qualification code: CL2

Age range: [Specific age ranges for the Sensory Profile 2's questionnaires](#)

Administration: Individual – up to 45 mins



Shaywitz Dyslexia Screen

Easily and efficiently screen individuals or groups for Dyslexia

The Shaywitz DyslexiaScreen is an efficient, reliable, and user-friendly Dyslexia screening tool for children who may be at risk for having Dyslexia. This tool emphasizes phonological, linguistic, and academic performance based on teacher observations, in just a couple of minutes per student—as opposed to other measures which take up precious instructional time.

Qualification code: CL2R

Age range: 5 years to 7 years 11 months

Administration: Individual – 5 mins



Validity Indicator Profile (VIP)

A well-validated tool to support forensic or neuropsychological evaluations

The VIP is designed to help meet the need for a well-validated, psychometrically sound test that provides support when your client is in courtrooms or other legal institutions. This test is intended to help provide support for conclusions that may impact the awarding of large sums of money or the determination of competence or culpability.

Qualification code: CL1

Age range: 18 years to 89 years

Administration: Individual – Verbal subtest: 20 minutes (78 items);
Nonverbal subtest: 30 mins (100 items)



Vineland Adaptive Behavior Scales, Third Edition (Vineland-3)

The leading instrument for supporting the diagnosis of intellectual and developmental disabilities

Designed to meet any adaptive behaviour assessment need, the Vineland-3 provides you with the leading instrument for supporting the diagnosis of intellectual and developmental disabilities. This tool addresses today's special needs populations, such as individuals with intellectual and developmental disabilities, autism spectrum disorder and ADHD.

Qualification code: CL2R

Age range: Birth to 90 years

Administration: Interview Form – 20 minutes, Parent/Caregiver &
Teacher Form, 10 minutes



Western Aphasia Battery - Revised (WAB-R)

A complete battery and a bedside instrument to quickly diagnose moderate to severe aphasia

The Western Aphasia Battery - Revised (WAB-R) is the updated version of the highly respected and widely used instrument for assessing adult patients with aphasia. It is an individually administered assessment for adults with acquired neurological disorders (e.g. as a result of a stroke, head injury or dementia).

Qualification code: CL2

Age range: 18 years to 89 years

Administration: Individual - 30 to 45 minutes; bedside WAB-R: 15 minutes



Wechsler Adult Intelligence Scale - Fourth UK Edition (WAIS-IV UK)



Helps you make realistic comparisons of performance between intelligence and memory

The WAIS-IVUK was developed to provide you with the most advanced measure of cognitive ability in adolescents and adults with a variety of neurological conditions. This test can be used to identify strengths and weaknesses, guide cognitive treatment and to provide reliable information for neuropsychological evaluations.

Qualification code: CL1

Age range: 16 years 90 years 11 months

Administration: Individual – 75 mins

Wechsler Intelligence Scale for Children ® - Fifth UK Edition (WISC-V UK)



The most proven and trusted cognitive ability measure ever

The Wechsler Intelligence Scale for Children®– Fifth UK Edition (WISC®–VUK) is the latest version of the most proven and trusted cognitive ability measure ever. WISC®–VUK has been redesigned to give you a truly comprehensive picture of a child's abilities and includes notable improvements to make identifying issues and finding the solutions faster and easier.

Qualification code: CL1

Age range: 6 to 16 years 11 months

Administration: Individual – approx. 60 mins

Wechsler Individual Achievement Test - Third UK Edition (WIAT-III UK)



Reliably measure and assess reading, language and numerical attainment in one test

Wechsler Individual Achievement Test - Third UK Edition (WIAT®-IIIUK) is the latest version of the most reliable and comprehensive assessment of reading, language and numerical attainment. The WIAT®-IIIUK is suitable for use in a variety of educational, clinical and research settings.

Qualification code: CL1

Age range: 4 to 25 years 11 months

Administration: Individual – 45 to 90 mins depending on age of the examinee

Wechsler Memory Scale - Fourth UK Edition (WMS-IV UK)



Assess verbal and non-verbal memory abilities in adults. Co-normed with WAIS-IVUK

The Wechsler Memory Scale – Fourth UK Edition is an individually administered assessment of memory and working memory. The WMS-IVUK also contains a brief evaluation of cognitive status. It has been developed to decrease testing time, reduce examinee fatigue, and improve the psychometric functioning of the subtests in older adults.

Qualification code: CL1

Age range: 16 years to 90 years 11 months

Administration: Individual – 75 mins

Wechsler Preschool & Primary Scale of Intelligence - Fourth UK Edition (WPPSI-IV UK)



An innovative, reliable and valid measure of cognitive development for young children

The WPPSI-IVUK is an innovative measure of cognitive development for preschool and young children that is rooted in contemporary theory and research. This new edition places a strong emphasis on child-friendly, developmentally appropriate features, with extensive enhancements that are targeted to benefit both children and examiners.

Qualification code: CL1

Age range: 2 years 6 months to 7 years 7 months

Administration: Core Subtests: Ages 2 years 6 months to 3 years 11 months; 30–45 Minutes, Ages 4 years to 7 years 7 months; 45–60 Minutes

Wide Range Achievement Test, Fifth Edition (WRAT5)



Efficiently measure and monitor foundational academic skills

The WRAT5 is easy to administer screener that provides an accurate way to identify possible learning disabilities, assess and monitor reading, spelling, and maths skills and helps to identify possible learning disabilities. You can test learners of all ages with only the subtests that are needed.

Qualification code: CL2R

Age range: 5 years to 85+ years

Administration: Individual – Ages 5-7: 15 to 25 mins; Ages 8 and older: 35 to 45 mins

Woodcock Reading Mastery Tests, Third Edition (WRMT-III)

The leading instrument for supporting the diagnosis of intellectual and developmental disabilities

Designed to meet any adaptive behaviour assessment need, the Vineland-3 provides you with the leading instrument for supporting the diagnosis of intellectual and developmental disabilities. This tool addresses today's special needs populations, such as individuals with intellectual and developmental disabilities, autism spectrum disorder and ADHD.

Qualification code: CL2R

Age range: 4 years 6 months to 79 years 11 months

Administration: Individual –15 to 45 mins



Sample Reports

Reading our Q-global® sample reports provides you with an insight into how administration reports are displayed for each available assessment.

[**View our assessment sample reports**](#)






What is Q-interactive™ ?

Q-interactive™ is a revolutionary digital solution that delivers the world's most advanced assessment tools to you using familiar technology that you can take with you anywhere. Q-interactive saves you time, whilst adding unprecedented flexibility, portability, convenience and efficiency.

It is created to cater to the specific test administration and reporting needs of Speech and Language Therapists, Psychologists and SENCOs/Specialist Teachers.

How Q-interactive and Q-global can maximise your digital assessment experience

System Driven	Clinician-Driven
<p>Take On-Screen Assessment</p> <ul style="list-style-type: none">• Supervised group or remote administration• The clinician is not required during testing session• The client responds directly on the digital device• Pay per report <p>Generate Scores & Reports from Paper Tests</p> <ul style="list-style-type: none">• Clinician administers test in paper-and pencil and captures raw scores on the record form• Raw scores are entered into the computer• Score and interpretive reports are automatically generated• Pay per report or unlimited scoring subscription 	<p>Administer and Score Individual Assessments Using Two iPads</p>  <ul style="list-style-type: none">• Clinician administers tests directly to the client• Scoring in on-the-fly• Central is the secured, web-based application and where a clinician manages client profiles, creates test batteries, runs reports, and exports/archives scored batteries.• Assess is the secured, tablet-based Q-interactive application where a clinician can administer a test using two iPads even without an internet connection 

	Q-global	Q-interactive
Test Administration	<p>The following are available for select assessments</p> <ul style="list-style-type: none"> • On-screen assessments (client enters responses directly into digital device) • Remote on-screen administration (a link is sent to respondent for completion of assessment) • Group administration • Paper-and-pencil administration with raw scores input into Q-global for scoring. 	<p>No more lugging heavy test kits, just two iPads</p> <ul style="list-style-type: none"> • Batteries can be selected tailored, or adjusted on-the-fly • The clinician controls the administration of the test • Test instructions stimuli, record forms, norms tables are all embedded in the system and accessible from the clinician's iPad • Responses are captured via handwriting and audio recording.
Scoring	<ul style="list-style-type: none"> • Input raw scores from paper and pencil • Administrations into a computer at the conclusion of the battery • At the end of the test and with internet connectivity: view test results. 	<ul style="list-style-type: none"> • Monitor test performance with on-the-fly scoring • Have the flexibility to override scores when the client self corrects • No need for internet connectivity to view score results
Reporting	<ul style="list-style-type: none"> • Basic score reports and combination reports • Interpretive reports for selected products are available. 	<ul style="list-style-type: none"> • Online scoring reports are available • Digital notes, which are captured directly on the iPad can be incorporated into reports



Privacy and Security

What information does Pearson collect about me?

Visit the [Q-global Privacy page](#) for detailed information on how and why we collect your data.

How does Pearson store and manage my data?

Q-global uses the highest level of encryption (128-bit) to ensure your online transmissions are secure. Please visit the [Q-global Security FAQs page](#) for information on how Pearson is committed to keeping your data safe and protected.



Q-global support

Need a little help to set up or use your new Q-global account?

We have a range of support to help you get going including:

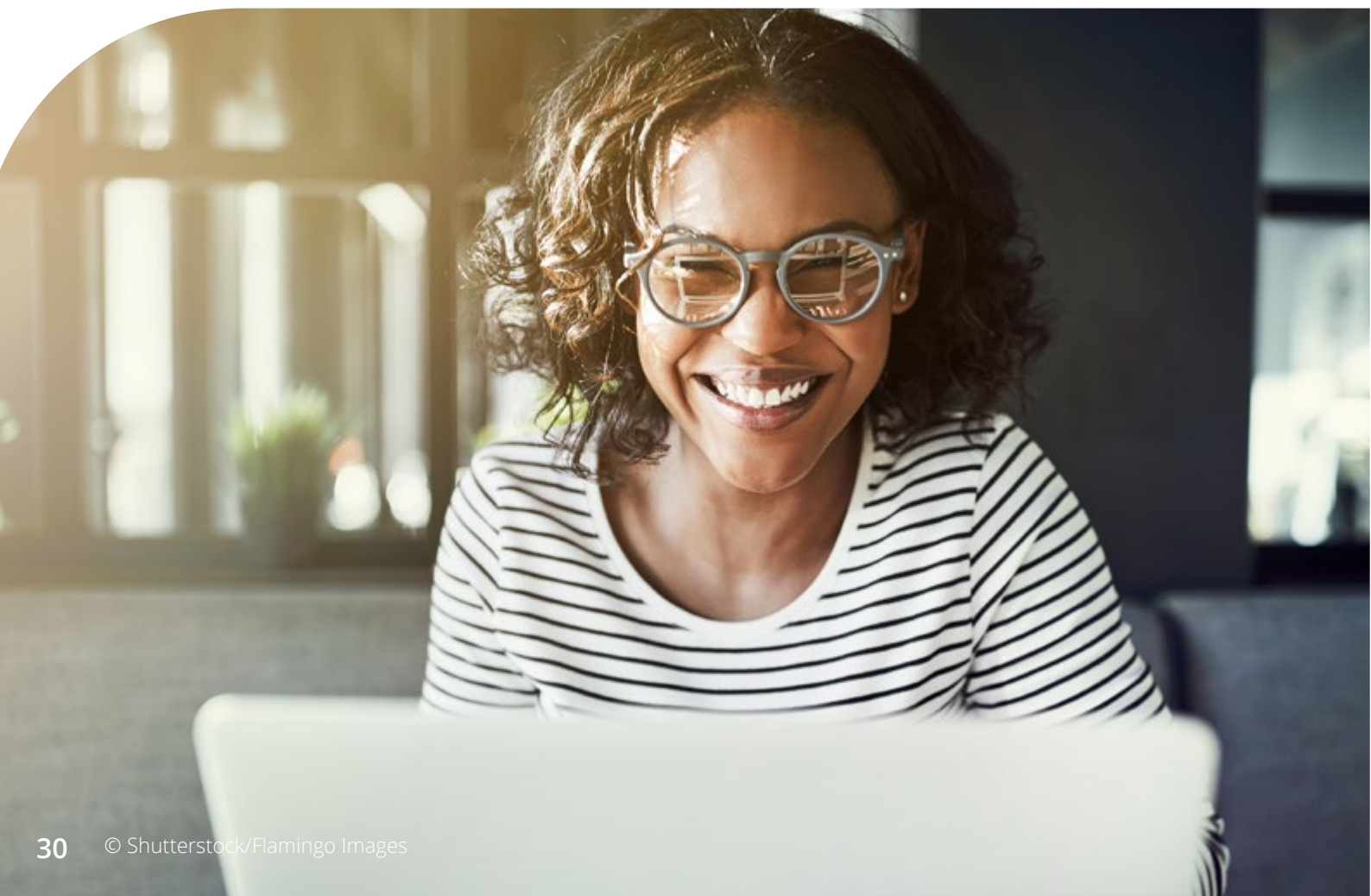
[Q-global Quick Start Guide](#)

[Q-global user guide](#)

[Accessing Q-global and resources video](#)

[Webinars](#)

Or use could chat to our Customer Success Team





Q-global™

Better Insights. Anytime. Anywhere.

Stay Connected

[Sign up](#) to our newsletter to receive the latest news

Follow us on Social media:



[@PearsonclinUK](#)



[@Pearson Clinical Assessment UK](#)



[@PearsonclinUK](#)