

# “By the Numbers”

The MMPI-3 provides an empirically validated, psychometrically up-to-date dimensional approach to assessment of personality and psychopathology.

**335**

items

**72**

new items

**24**

updated items



**25–35**

minutes to administer  
(by computer)



*English-  
language norms*

810 men  
810 women

*Spanish-  
language norms*

275 men  
275 women

## Scales

**5**

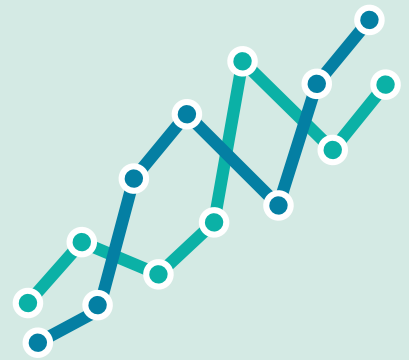
new scales

Combined Response Inconsistency  
Eating Concerns  
Compulsivity  
Impulsivity  
Self-Importance

**52**

total scales

10 Validity Scales  
3 Higher-Order (H-O) Scales  
8 Restructured Clinical (RC) Scales  
26 Specific Problems (SP) Scales  
5 Personality Psychopathology  
Five (PSY-5) Scales



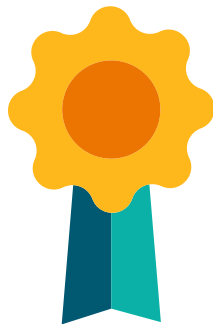
## Validity & Reliability

**37,968**

validity coefficients  
across a variety of  
settings\*

**38,850**

comparisons of MMPI-2-RF/  
MMPI-3 correlates\*\*



*Reliability estimates and standard errors  
of measurement provided for*

**1,620**

participants in  
the normative  
sample

**275**

individuals in  
the normative  
test-retest sample

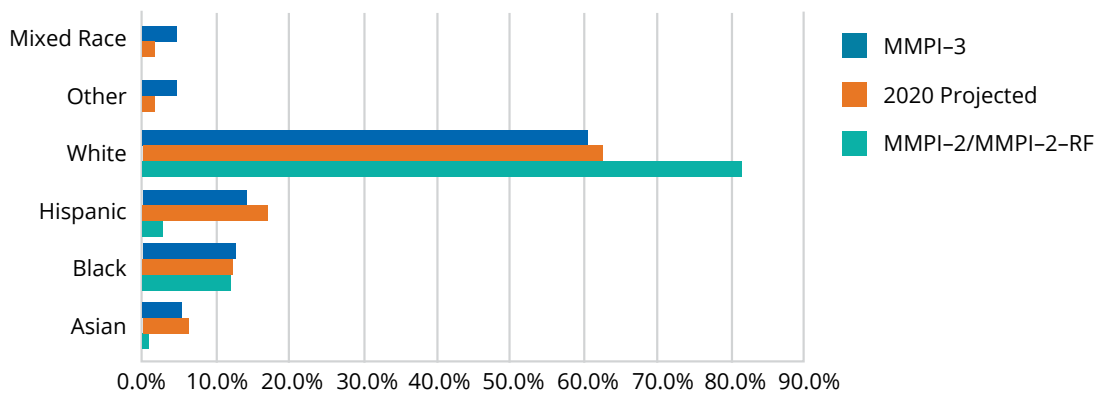
**791**

clients in an  
outpatient mental  
health sample

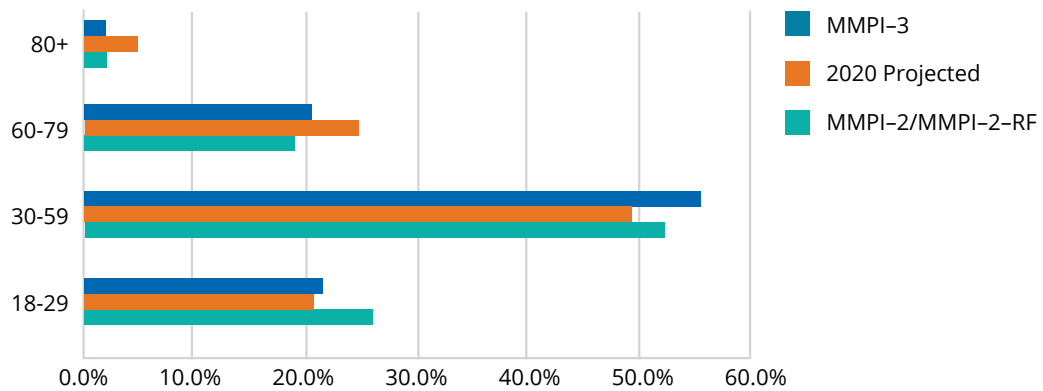
\*MMPI-3 Technical Manual, Appendix D

\*\*MMPI-3 Technical Manual, Appendix E

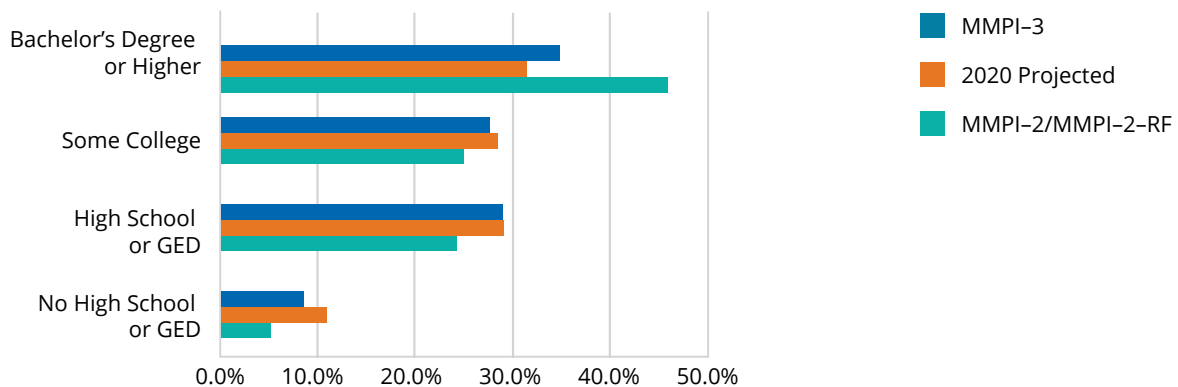
### Ethnic Origins of Participants in the MMPI-3 Normative Sample Compared to 2020 Projected Census Data and MMPI-2/MMPI-2-RF Normative Sample



### Age Distribution of Participants in the MMPI-3 Normative Sample Compared to 2020 Projected Census Data and MMPI-2/MMPI-2-RF Normative Sample



### Education of Participants in the MMPI-3 Normative Sample Compared to 2020 Projected Census Data and MMPI-2/MMPI-2-RF Normative Sample



For training, sample reports, comparison groups, and more visit [Pearsonclinical.co.uk/MMPI3](https://Pearsonclinical.co.uk/MMPI3).