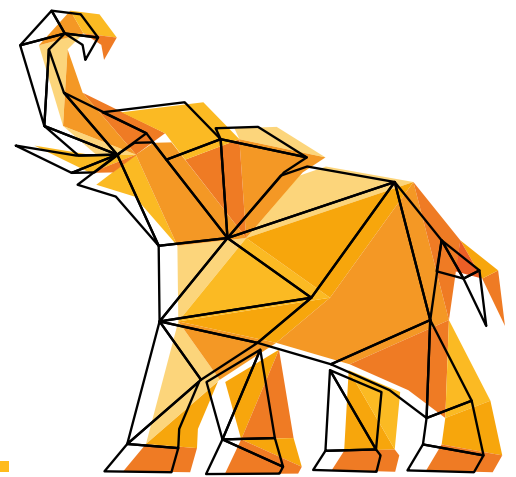




Trumpeting your way!



Flexible memory assessment for all ages

The Wide Range™ Assessment of Memory and Learning, Third Edition (WRAML™3) measures short- and long-term memory and the ability to learn new material in children and adults. This flexible and engaging lifespan assessment includes updated norms, content, and artwork reflective of today's population.

The NEW WRAML3 features:

- ▶ Content relevant for lifespan assessment including age-appropriate artwork and stories
- ▶ Fun and engaging tasks
- ▶ Expanded coverage of working memory subtests to full age range
- ▶ Appropriate content for diverse populations
- ▶ Additional scores for qualitative analysis

Why WRAML3?

Key benefits of this new edition

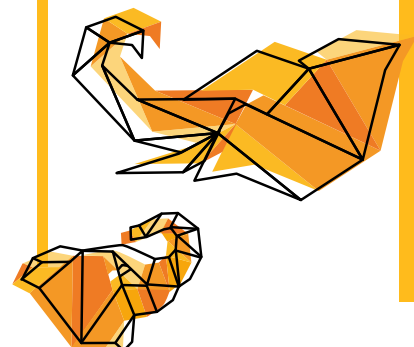
- ▶ Flexible administration options
 - ☹ Screener: Subtests can integrate with full battery
 - ☹ Brief: Abbreviated, stand-alone battery
 - ☹ Full administration
- ▶ Enhanced items and structure
 - ☹ New and updated items reflect today's clients with updated, age-appropriate artwork for a true lifespan assessment
 - ☹ New items measure visual delayed memory
 - ☹ Improved administration of finger windows
 - ☹ Easy and accurate
- ▶ Updated norms reflective of our diverse population; updated reliability and validity studies
- ▶ Optional web-based scoring and reporting via Q-global®
 - ☹ Access to standard scores, scaled scores, qualitative analysis scores, percentiles, and age equivalents using either hand-scoring or Q-global scoring and reporting options
- ▶ *One assessment that allows you to measure memory and learning for clients ages 5:0–90:11*

Digital scoring and reporting

The WRAML3 will offer optional web-based scoring and reporting via Q-global.

WRAML3 is all grown up!

New artwork designed specifically for adult clients.



WRAML2 v WRAML3: What's Changed?

WRAML2

WRAML™ 3

Administration

- Screening Form
- Core subtests with optional subtests
- Screening Form – subtests can be plugged into Core battery
- Brief Form – abbreviated stand alone battery
- Core subtests with supplementary subtests
- Improved administration procedures for Finger Windows

Content

- Assesses verbal and visual immediate recall, verbal delayed recall, and verbal and visual delayed recognition memory.
- Assesses attention concentration
- Assesses working memory
- Assesses verbal and visual immediate and delayed recall, and delayed recognition
- Assesses attention/concentration
- Assesses verbal and visual working memory
- Developmentally appropriate content for adults
- Expanded coverage of working memory subtests to full age range

Norms and Clinical Studies

- Data collected 2002–2003
- Data collected 2019–2020
- Updated reliability and validity studies

Scoring and Reporting

- Paper and pencil administration and scoring
- WRAML2 scoring software
- Paper and pencil administration and scoring
- Web-based scoring and reporting via Q-global

[Pearsonclinical.co.uk](https://www.pearsonclinical.co.uk)

2021 Pearson Education, Inc. or its affiliates. All rights reserved. Pearson and Q-global are trademarks, in the UK and/or other countries, of Pearson plc. Wide Range and WRAML are trademarks of Wide Range, Inc. CLINA23277 MJL 01/21

PEUK B0482 | Version 1.0 | Clinical & UKS | Jun 2021 | DCL1: Public

