



SSIS™ SEL
Social-Emotional Learning Edition

Frank M. Gresham, PhD
Stephen N. Elliott, PhD

Giving Students The Foundation They Need to be Successful

A comprehensive, evidenced-based, social and emotional learning system that also assesses key academic skills and integrates the assessments with an aligned, multi-tiered intervention.

The Importance of Social-Emotional Learning for Academic Development



11%
Supporting
Students'

social and emotional development results in an average of 11% gain in grades and test scores.



75%

of the words students use to describe how they feel at school are negative. Integrating social and emotional skills learning into the curriculum improves students' attitudes and engagement.

80%
of Employers

say social and emotional skills are extremely important to achieving success.

90%
of Educators

believe that social and emotional skills can benefit their students, and more importantly, that they can be taught.



“

Improving children's social skills improves motivation to learn and engagement, which results in greater academic achievement. Social skills are academic enablers!

”

—DiPerna, Volpe, & Elliott (2002)

Students with well-developed social emotional skills spend more time on task and more time helping others, resulting in a decrease in negative behaviour and significant increases in learning opportunities and academic achievement. The key elements of these social-emotional skills are: self-awareness, self-management, social awareness, relationship skills, and responsible decision making. A deficit in any of these skills can lead to behaviour and emotional difficulties and less involvement in academics.



Pearson

What is SEL?

Fully aligned with the CASEL framework, the SSIS™ SEL edition provides evidence-based tools to assess and teach skills in each of the five SEL domains as well as the three key academic competencies established in the original Social Skills Improvement System:

1. Self-awareness
2. Self-management
3. Social awareness
4. Relationship skills
5. Responsible decision making
6. Motivation to learn
7. Reading skills
8. Mathematics skills

The **SSIS SEL Classwide Intervention Program (CIP)** is a S.A.F.E.—Sequenced, Active, Focused, and Explicit—program for students, ages 4 to 14.

The PowerPoint lessons, videos, role-playing exercises, and a variety of cue cards make each lesson an engaging learning experience for all students!



© 2017 CASEL

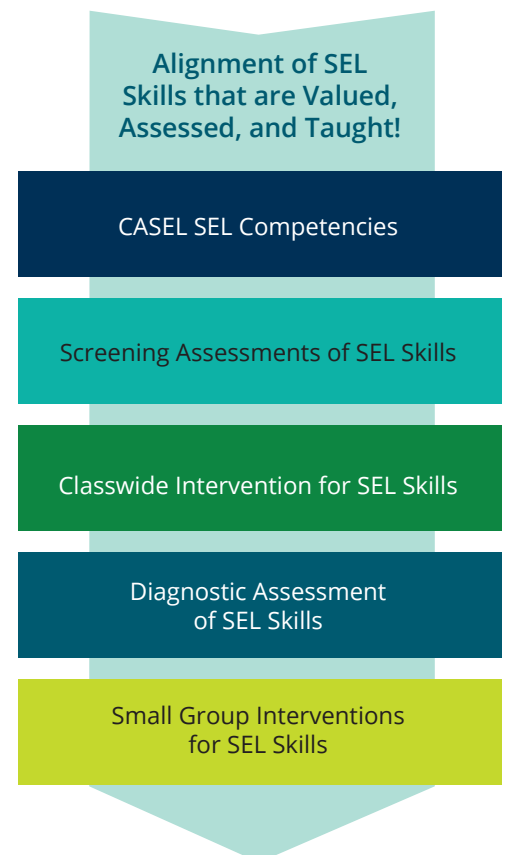
The good news! These skills can be **TAUGHT** and continuously **IMPROVED**.

The most effective approach to preventing these challenging behaviors is to:

- Directly teach foundational social and emotional skills
- Create a classroom environment where social emotional skills are talked about, practiced, and supported by the teacher and peers
- Model and reinforce periodic self-monitoring of one's social emotional well-being and continued efforts to improve

The social emotional learning skills that students need to be successful can be taught using the classroom-tested, evidenced-based skill units in the **SSIS SEL Classwide Intervention Program (CIP)**.

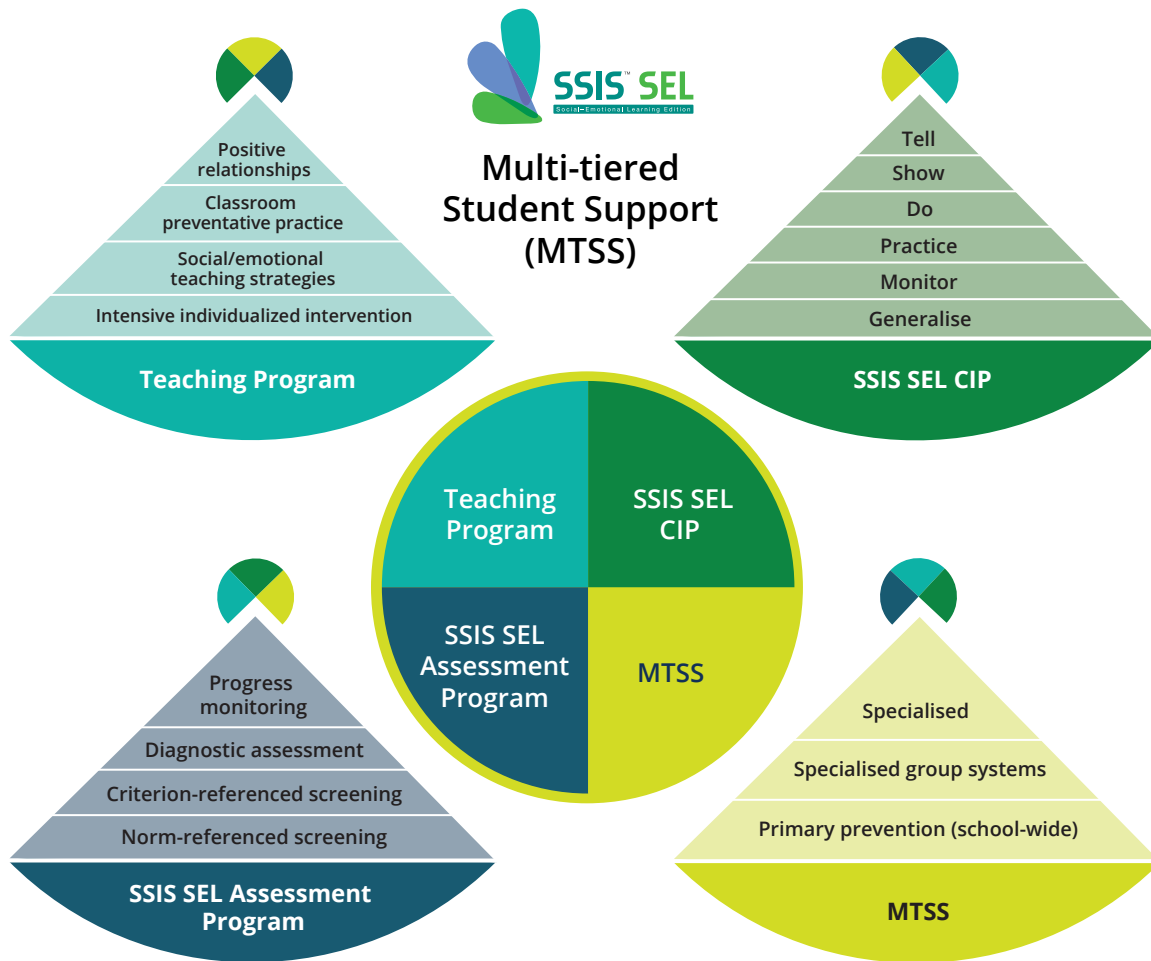
The SSIS SEL provides universal intervention for students ages 4–14 and can also be used for small groups in Tier 2 and 3 interventions. It covers the entire assessment cycle of screen, assess, intervene, monitor, and evaluate with tools that are fully aligned allowing you to assess the same skills that you teach!



Develop each of the five major SEL competence domains.



While most social emotional skills intervention systems have addressed basic social competencies, the SSIS SEL Edition has taken it a step further to provide educators and other users with a comprehensive social and emotional skills learning solution.



Features & Benefits

Updated and Aligned—This revision brings the SSIS in line with the CASEL framework and addresses core social-emotional skills.

Comprehensive—The SSIS SEL includes the full assessment cycle, and is the only SEL measure to also assess key academic skill areas.

Effective—The SSIS SEL is a highly engaging and focused intervention solution proven effective for improving children’s social and academic performance.

For more information including pricing visit [Pearsonclinical.co.uk/ssisbrochure](https://www.pearsonclinical.co.uk/ssisbrochure)



OVERVIEW

Administer to:

Students, ages 4–14

Qualification Level:

CL2R

Completion Time:

10–25 Mins

Format:

Q-global® and Paper



“

Social and emotional competency is at least as predictive of academic and career success as is IQ.

”

—Almlund, Duckworth, Heckman, & Kautz (2011)

Content & Administration

The **SSIS™ SEL Classwide Intervention Program’s (CIP)** skill units are visually engaging, effective, and is the only solution of its kind to also teach social and emotional skills known to improve academic engagement and achievement. It is a multi-component, digitized system for use with preschool through high school students to help consistently screen, assess, and remediate key academic-enabling behaviours and social-emotional skills. Key instructional resources are right at your finger tips—**online** and easily accessible by skill units.

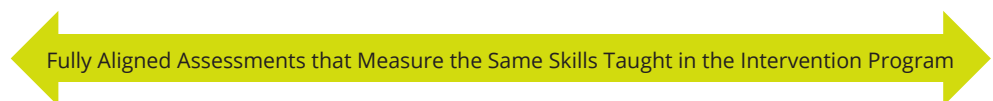
Components

SSIS SEL Edition Screening/Progress Monitoring Scales—This brief (30 to 45 minutes), class-based, criterion referenced rating scale can be used to assess students’ strengths and improvement areas across five SEL and three academic competencies. Completed by teachers, this assessment can be used to screen an entire class or school of students, then used to monitor the effects of CASEL-aligned interventions.

SSIS SEL Edition Teacher, Parent, and Student Forms—These norm-referenced behaviour rating forms can be completed in 10 minutes or less by a teacher, parent, or student, and provide different viewpoints on the social-emotional functioning of a student.

SSIS SEL Edition Classwide Intervention Program (CIP)—Used by teachers or behavioural specialists, this program provides a comprehensive and engaging six-step (Tell, Show, Do, Practice, Monitor Progress, and Generalise) approach for teaching social-emotional skills. It consists of scripted weekly lesson plans for each of the 10 core social-emotional skills, along with accompanying Digital Lessons and video vignettes that can be used to engage a class when teaching the skills. In addition, it provides lesson plans for 13 advanced SEL skills.

Screening	Intervention	Assessment
SSIS SEL Edition Screening/Process Monitoring Scales	SSIS SEL Edition Classwide Intervention Program (CIP)	SSIS SEL Edition Rating Forms



For more information including pricing visit
[Pearsonclinical.co.uk/ssisbrochure](https://pearsonclinical.co.uk/ssisbrochure)

Pearsonclinical.co.uk

Copyright © 2019 Pearson Education. All rights reserved.
 CLINA15775 - 36761 SR 12/19
 Version 1.0 | UKS Clinical | June 2021 | DCL1: Public
 PEUK B0481_b

F7137BR

