

Bracken

Basic Concept Scale—Third Edition:Receptive

Name: Joe A Sample
 Date of Birth: 10/4/2000
 Gender: Male
 Grade: 1st

Test Date: 10/4/2008
 Age at Testing: 8 years 0 months
 Report Date: 10/5/2008
 Examiner: Andy Gibson
 Teacher: K. Jackson
 School/Agency: George Washington Elementary

BBCS-3:R Teacher Report Score Summary

Subtest	Raw Score		Scaled Score	Scaled Score Confidence Interval (90% Level)	Percentile Rank	Percentile Rank Confidence Interval	Descriptive Classification	Concept Age Equivalent
1-5 SRC	16		1	1 to 3	0.1	0.1 to 1	Very Delayed	<3.0
6 Direction/Position	11		2	1 to 3	0.4	0.1 to 1	Very Delayed	3.1
7 Self-/Social Awareness	32		12	10 to 14	75	50 to 91	Average	6.7
8 Texture/Material	22		9	7 to 11	37	16 to 63	Average	5.9
9 Quantity	22		8	7 to 9	25	16 to 37	Average	5.0
10 Time/Sequence	12		7	6 to 8	16	9 to 25	Delayed	4.7

Composite	Sum of Raw Scores	Sum of Scaled Scores	Composite Score	Composite Score Confidence Interval (90% Level)	Percentile Rank	Percentile Rank Confidence Interval	Descriptive Classification	Concept Age Equivalent
Receptive TC	115	39	79	76 to 83	8	5 to 13	Delayed	3.11
Receptive SRC	16		40	40 to 48	<0.1	<0.1 to <0.1	Very Delayed	

Discrepancy Comparisons

	Score 1	Score 2	Difference	Critical Value	Significant Difference? (Y or N)	Prevalence in Normative Sample	Level of Significance
Receptive TC—Expressive TC	79	53	26	5	Y	0.6	.15
Receptive SRC—Expressive SRC	40	66	-26	9	Y	1.1	.15

Receptive TC—Receptive Total Composite, Expressive TC—Expressive Total Composite.
 Receptive SRC—Receptive School Readiness Composite, Expressive SRC—Expressive School Readiness Composite.

Bracken

Basic Concept Scale—Third Edition:Receptive

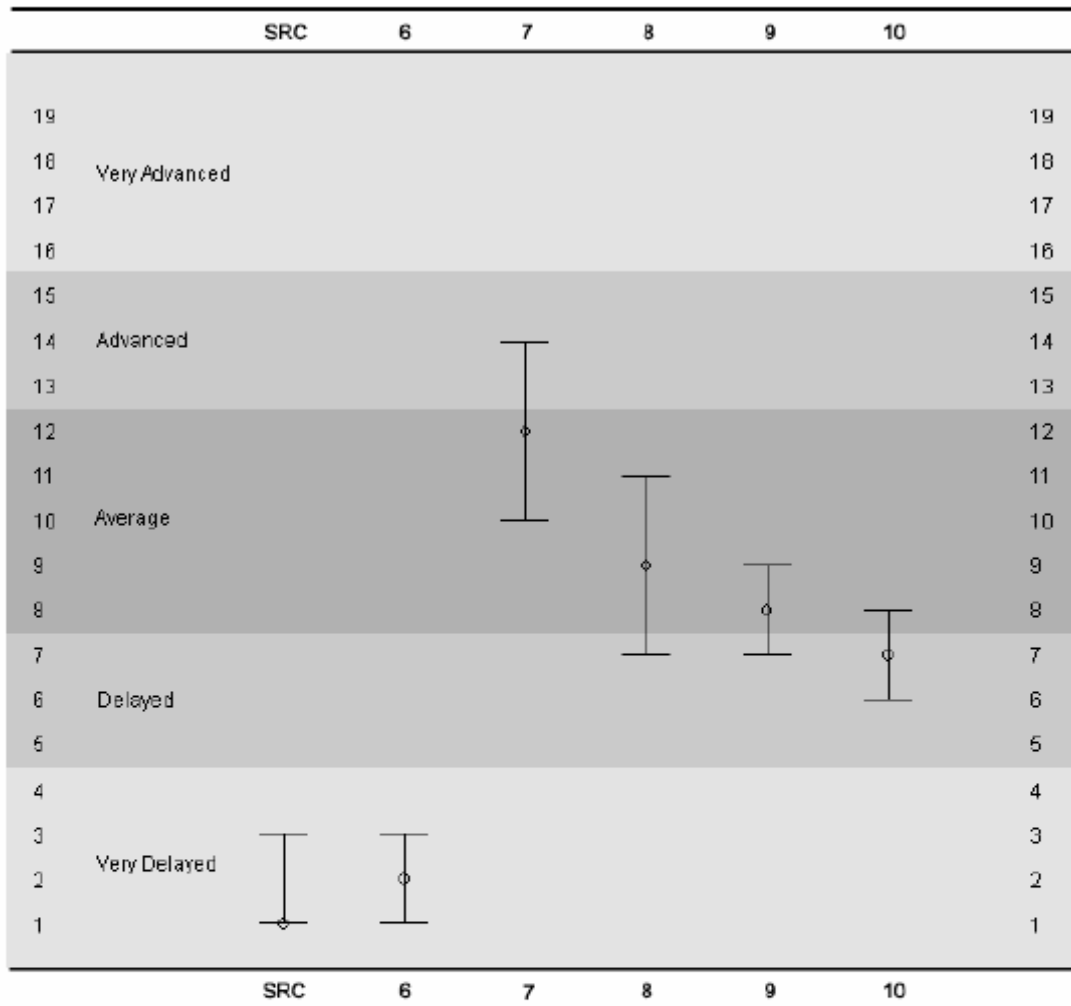
Receptive TC and Receptive SRC Composite Scores

Receptive TC		Receptive SRC
160		160
155		155
150		150
145	Very Advanced	145
140		140
135		135
130		130
125		125
120	Advanced	120
115		115
110		110
105		105
100	Average	100
95		95
90		90
85		85
80	Delayed	80
75		75
70		70
65		65
60		60
55	Very Delayed	55
50		50
45		45
40		40
Receptive TC		Receptive SRC

Bracken

Basic Concept Scale—Third Edition:Receptive

Subtest Scaled Scores



Bracken

Basic Concept Scale—Third Edition:Receptive

Receptive TC and Receptive SRC Percentile Ranks

Receptive TC		Receptive SRC
100	Very Advanced	100
95		95
90	Advanced	90
85		85
80		80
75		75
70		70
65		65
60		60
55		55
50	Average	50
45		45
40		40
35		35
30		30
25		25
20		20
15		15
10	Delayed	10
5		5
0	Very Delayed	0

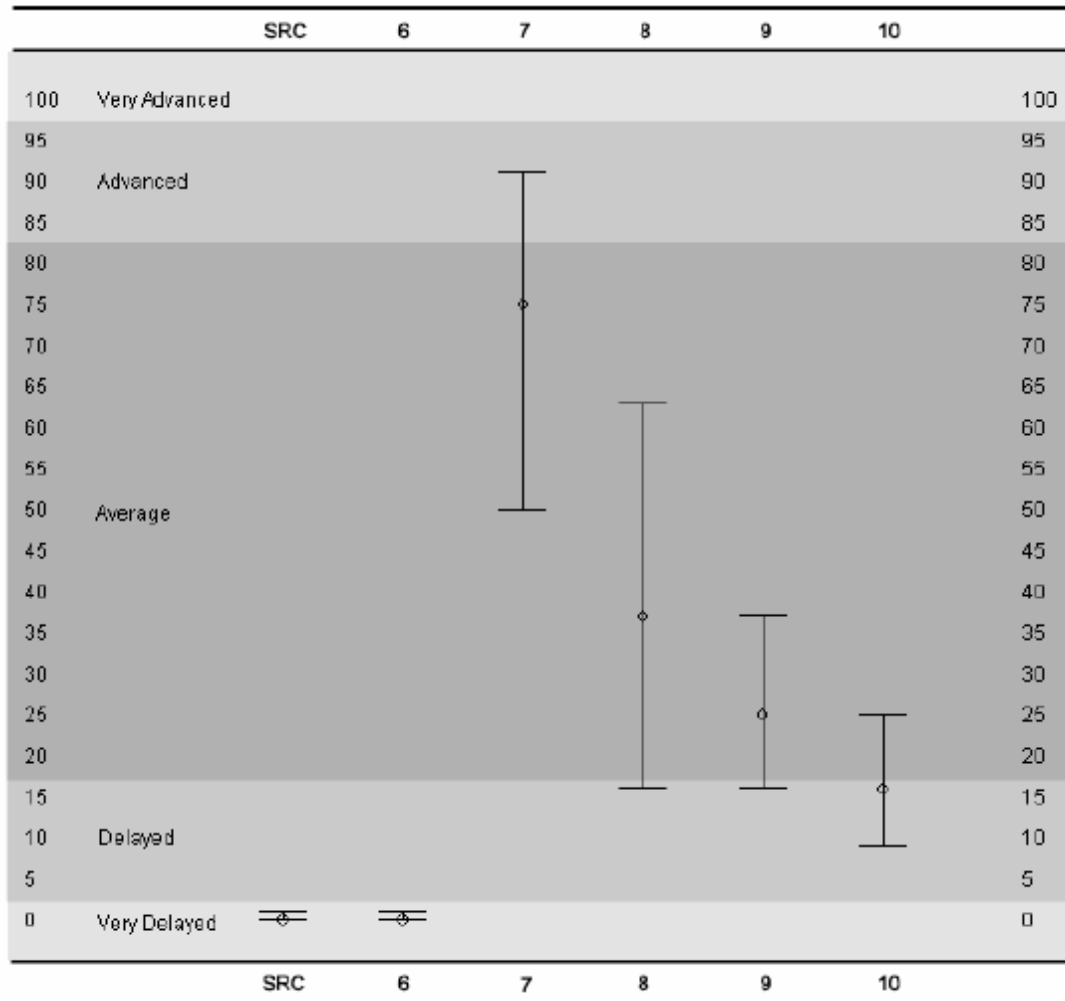
Receptive TC

Receptive SRC

Bracken

Basic Concept Scale—Third Edition:Receptive

Subtest Percentile Ranks



Bracken

Basic Concept Scale—Third Edition:Receptive

Item Analysis

Bracken Basic Concept Scale—Third Edition: Receptive assesses children's knowledge of important basic concepts. The following Item Analysis table identifies the concepts that Joe responded to correctly and those that he did not respond to correctly.

M = The child probably understands the concept in most situations (Mastered).

NM = The child probably does not understand the concept in most situations (Not Mastered).

Teach the concepts in a variety of natural situations such as playtime or mealtime.

COLORS		M	NM	Lesson Plan
1	red	M		Lesson 1
2	blue		NM	Lesson 3
3	green		NM	Lesson 1
4	black		NM	Lesson 5
5	yellow		NM	Lesson 1
6	pink		NM	Lesson 5
7	orange		NM	Lesson 2
8	purple		NM	Lesson 4
9	white		NM	Lesson 3
10	brown		NM	Lesson 6

LETTERS		M	NM	Lesson Plan
1	A		NM	Lesson 72
2	W		NM	Lesson 77
3	X		NM	NA
4	S		NM	Lesson 76
5	K		NM	Lesson 74
6	H		NM	Lesson 73
7	Q		NM	Lesson 76
8	D		NM	Lesson 72
9	m		NM	Lesson 75
10	i		NM	Lesson 74
11	b		NM	Lesson 72
12	e		NM	Lesson 73
13	t		NM	Lesson 76
14	j		NM	Lesson 74
15	g		NM	Lesson 73

Bracken

Basic Concept Scale—Third Edition:Receptive

NUMBERS/COUNTING		M	NM	Lesson Plan
1	one	M		Lesson 79
2	three	M		Lesson 79
3	two	M		Lesson 79
4	four	M		Lesson 80
5	zero	M		Lesson 79
6	three	M		Lesson 79
7	six		NM	Lesson 80
8	nine		NM	Lesson 81
9	five		NM	Lesson 80
10	seven		NM	Lesson 80
11	eight		NM	Lesson 81
12	six		NM	Lesson 80
13	nine	M		Lesson 81
14	forty-one	M		NA
15	eleven	M		Lesson 81
16	ninety-five	M		NA
17	twenty-seven	M		NA
18	fifty-three	M		NA

Bracken

Basic Concept Scale—Third Edition:Receptive

SIZES/COMPARISONS		M	NM	Lesson Plan
1	big		NM	Lesson 39
2	small	M		Lesson 39
3	long		NM	Lesson 42
4	little		NM	Lesson 39
5	not the same		NM	Lesson 9
6	short		NM	Lesson 41
7	match		NM	NA
8	different		NM	Lesson 9
9	tall		NM	Lesson 41
10	deep		NM	Lesson 40
11	large		NM	Lesson 39
12	same		NM	Lesson 9
13	alike		NM	Lesson 9
14	wide		NM	Lesson 41
15	exactly		NM	NA
16	other than		NM	Lesson 10
17	similar		NM	NA
18	equal		NM	Lesson 10
19	thin		NM	Lesson 42
20	narrow		NM	Lesson 41
21	unequal		NM	NA
22	shallow		NM	Lesson 40

Bracken

Basic Concept Scale—Third Edition:Receptive

SHAPES		M	NM	Lesson Plan
1	star		NM	Lesson 11
2	heart		NM	NA
3	circle		NM	Lesson 11
4	line	M		Lesson 13
5	square		NM	Lesson 11
6	triangle		NM	Lesson 11
7	cone	M		NA
8	round		NM	Lesson 12
9	diamond		NM	Lesson 15
10	oval		NM	Lesson 15
11	rectangle		NM	Lesson 15
12	check mark		NM	NA
13	row		NM	Lesson 13
14	pyramid		NM	Lesson 16
15	cylinder		NM	NA
16	cube		NM	Lesson 16
17	curve		NM	Lesson 12
18	column		NM	NA
19	diagonal		NM	Lesson 14
20	angle		NM	Lesson 12

Bracken

Basic Concept Scale—Third Edition:Receptive

DIRECTION/POSITION		M	NM	Lesson Plan
1	on		NM	Lesson 17
2	open		NM	Lesson 17
3	in		NM	Lesson 17
4	closed		NM	Lesson 17
5	off	M		Lesson 17
6	under		NM	Lesson 18
7	up		NM	Lesson 22
8	upside down	M		Lesson 25
9	behind		NM	Lesson 23
10	top	M		Lesson 19
11	out		NM	Lesson 17
12	high		NM	Lesson 24
13	apart	M		NA
14	close	M		Lesson 21
15	around		NM	Lesson 18
16	next to	M		Lesson 23
17	outside	M		Lesson 20
18	near		NM	Lesson 24
19	in front		NM	Lesson 23
20	together	M		Lesson 20
21	away		NM	Lesson 27
22	middle		NM	Lesson 21
23	bottom		NM	Lesson 19
24	into		NM	Lesson 21
25	down	M		Lesson 22
26	following		NM	NA
27	side		NM	NA
28	through		NM	Lesson 18
29	between		NM	Lesson 23
30	front		NM	Lesson 19
31	backward		NM	Lesson 28
32	beside		NM	Lesson 30
33	edge		NM	Lesson 26
34	back		NM	Lesson 19
35	low		NM	Lesson 24
36	straight		NM	NA
37	corner		NM	Lesson 26
38	toward		NM	Lesson 27
39	falling		NM	Lesson 29
40	end		NM	Lesson 26
41	still		NM	Lesson 22
42	joined		NM	Lesson 27
43	below		NM	Lesson 29
44	above		NM	Lesson 29
45	across from		NM	Lesson 28
46	forward		NM	Lesson 28
47	turn		NM	NA
48	space		NM	NA
49	over		NM	Lesson 18/66
50	underlined		NM	NA
51	sideways		NM	Lesson 28
52	inside-out		NM	Lesson 25
53	ahead		NM	NA
54	center		NM	Lesson 31
55	level		NM	Lesson 30
56	separated		NM	Lesson 27

Bracken

Basic Concept Scale—Third Edition:Receptive

57	rising		NM	Lesson 29
58	height		NM	NA
59	opposite		NM	Lesson 30
60	right		NM	Lesson 31
61	length		NM	NA
62	left		NM	Lesson 31

Bracken

Basic Concept Scale—Third Edition:Receptive

SELF-/SOCIAL AWARENESS		M	NM	Lesson Plan
1	crying	M		NA
2	laughing	M		NA
3	sad	M		Lesson 34
4	man	M		Lesson 32
5	girl	M		Lesson 33
8	boy		NM	Lesson 33
7	afraid	M		Lesson 38
8	angry	M		Lesson 35
9	brothers	M		Lesson 32
10	hurt	M		NA
11	sisters	M		Lesson 32
12	happy	M		Lesson 34
13	relaxing	M		Lesson 37
14	resting	M		NA
15	tired	M		Lesson 38
18	woman	M		Lesson 32
17	old	M		Lesson 36/64
18	excited	M		Lesson 35
19	mother	M		Lesson 32
20	wrong	M		Lesson 34
21	sleepy	M		NA
22	father	M		Lesson 32
23	friendly	M		Lesson 37
24	frowning	M		NA
25	worried	M		NA
28	right	M		Lesson 34
27	healthy	M		Lesson 37
28	easy	M		Lesson 36
29	difficult	M		Lesson 36
30	disappointed	M		Lesson 35
31	young	M		Lesson 36
32	correct	M		NA
33	curious	M		Lesson 38

Bracken

Basic Concept Scale—Third Edition:Receptive

TEXTURE/MATERIAL		M	NM	Lesson Plan
1	wet		NM	NA
2	heavy		NM	NA
3	loud		NM	Lesson 43
4	dark		NM	Lesson 43
5	quiet		NM	Lesson 43
6	soft		NM	Lesson 44
7	wood	M		Lesson 46
8	sharp	M		Lesson 44
9	hard		NM	Lesson 44
10	glass	M		Lesson 46
11	shiny	M		Lesson 49
12	light	M		Lesson 43
13	boiling	M		NA
14	flat	M		Lesson 49
15	bright	M		Lesson 49
16	gas	M		Lesson 48
17	metal	M		Lesson 46
18	reflection	M		NA
19	smooth	M		Lesson 47
20	cloth	M		NA
21	rough	M		Lesson 47
22	clear	M		Lesson 49
23	dry	M		NA
24	tight	M		Lesson 50
25	loose	M		Lesson 50
26	light	M		NA
27	solid	M		Lesson 48
28	dull	M		Lesson 44
29	liquid	M		Lesson 48

Bracken

Basic Concept Scale—Third Edition:Receptive

QUANTITY		M	NM	Lesson Plan
1	many		NM	Lesson 52
2	whole		NM	Lesson 51
3	empty		NM	Lesson 51
4	full		NM	Lesson 51
5	none		NM	Lesson 52
6	nothing		NM	Lesson 53
7	both		NM	Lesson 54
8	all	M		Lesson 56
9	most		NM	Lesson 60
10	enough		NM	Lesson 53
11	alone	M		Lesson 54
12	every		NM	Lesson 57
13	with	M		Lesson 57
14	missing		NM	Lesson 56
15	piece	M		Lesson 51
16	almost		NM	Lesson 61
17	each	M		NA
18	left		NM	Lesson 56
19	greatest		NM	Lesson 57
20	part	M		NA
21	little	M		Lesson 58
22	except	M		Lesson 58
23	dozen		NM	NA
24	without	M		Lesson 58
25	half	M		Lesson 51
26	more than	M		Lesson 60
27	several	M		Lesson 56
28	least	M		Lesson 60
29	less than		NM	Lesson 60
30	pair		NM	Lesson 59
31	another	M		Lesson 59
32	divided	M		NA
33	double		NM	NA
34	single	M		Lesson 54
35	add	M		NA
36	neither	M		Lesson 59
37	couple	M		Lesson 54
38	some	M		Lesson 52
39	few	M		NA
40	weight		NM	NA
41	subtract	M		NA
42	as many as		NM	Lesson 61
43	triple		NM	NA

Bracken

Basic Concept Scale—Third Edition:Receptive

TIME/SEQUENCE		M	NM	Lesson Plan
1	new		NM	Lesson 64
2	old		NM	Lesson 64
3	finished		NM	Lesson 62
4	last	M		Lesson 62
5	daytime		NM	Lesson 67
6	waiting		NM	Lesson 64
7	through	M		Lesson 63
8	starting	M		Lesson 63
9	skipped	M		Lesson 70
10	quit		NM	Lesson 69
11	next		NM	Lesson 70
12	beginning	M		Lesson 62
13	order	M		Lesson 70
14	morning	M		Lesson 63
15	before	M		Lesson 68
16	first	M		Lesson 62/71
17	slow		NM	Lesson 62
18	twice		NM	NA
19	third	M		Lesson 71
20	always	M		Lesson 69
21	second		NM	Lesson 71
22	never		NM	Lesson 69
23	late	M		Lesson 67
24	after		NM	Lesson 68
25	arriving		NM	Lesson 64
26	just		NM	Lesson 70
27	over		NM	Lesson 66
28	fourth		NM	Lesson 71
29	early		NM	Lesson 67
30	nearly		NM	NA

Refer to LESSON PLAN in the HELP file to view the sample lesson plan, corresponding worksheets, and concept cards.

Notes:

Please advise parents of scores on this report.

Summary:

This report lists the subtests that Joe was given and scores that reflect his performance. The Item Analysis lists the concepts that Joe has mastered and those that he has not mastered. You can use the Item Analysis to decide which concepts you may want to work on with Joe.

Please discuss any questions or concerns you have with Andy Gibson.

Signature _____

Date _____